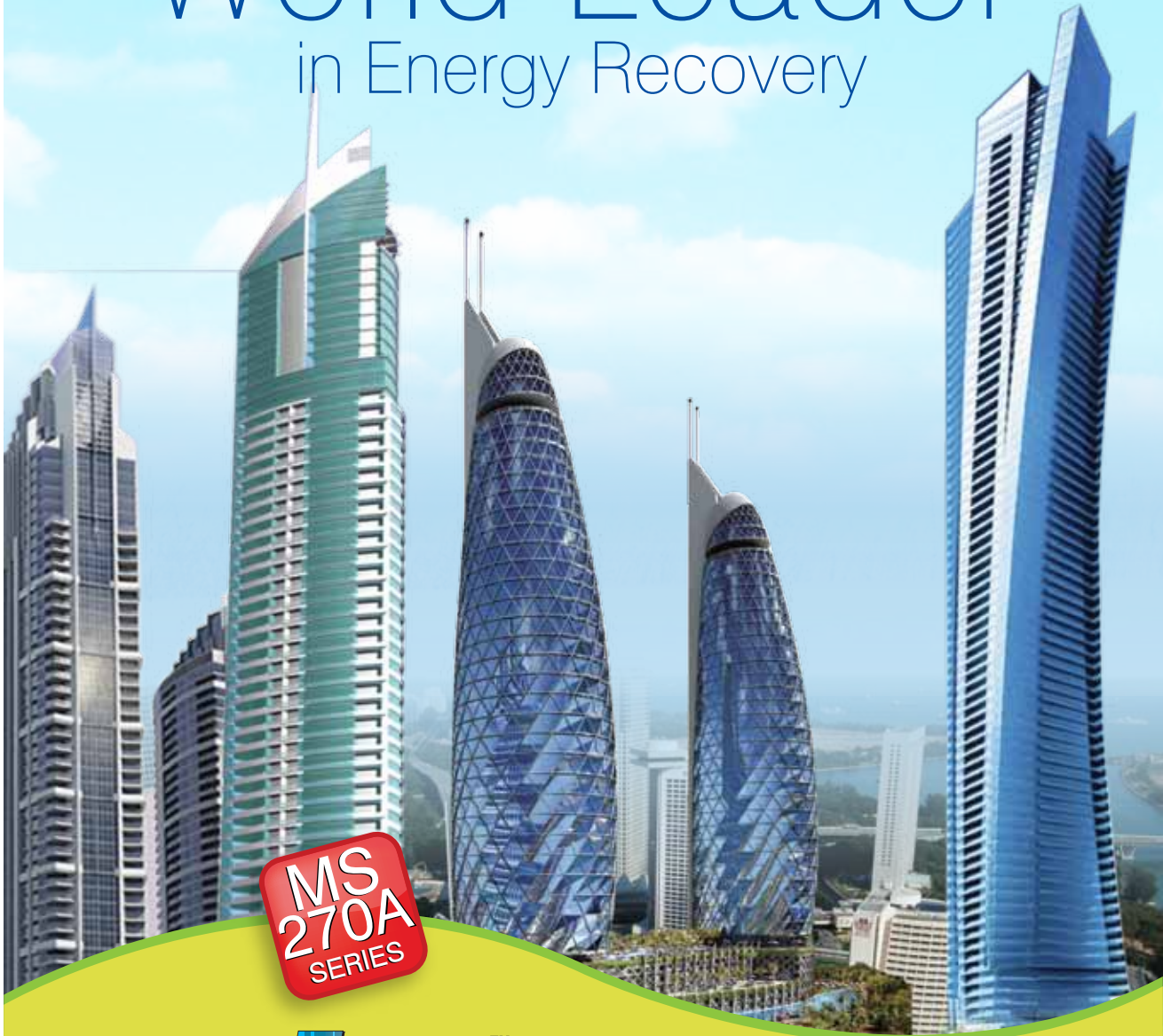


World Leader

in Energy Recovery



MS
270A
SERIES

DRI™ ECO FRESH™
Energy Recovery Wheels



World Class Features

High Selectivity :

EcoFresh Energy Wheels MS 270A series use **Molecular Sieve 3Å (EcoSorb 300)** desiccant coated on aluminium substrate. This results in high latent recovery and control on cross contamination.

Aluminium Substrate :

The aluminium substrate eliminates any fire risks and results in high sensible recovery and high structural strength.

In-built purge sector eliminates cross contamination :

Purge section provides strict separation of air flows, preventing carryover of bacteria, dust and pollutants from exhaust air to supply air.

Purge section and sealing system limit cross contamination to 0.04% of the exhaust air concentration by volume.

Non-Contact Labyrinth Seal :

- No wear and tear
- Effective sealing
- Long life
- Brush seal for wheels upto 2200 mm.

Structural Rigidity, Hardened Edges and Innovative Manufacturing Design :

- State-of-the-art winding technology and adhesives give EcoFresh rotors high structural strength.
- Wheel edges hardened as standard to suit [*marine coastal application needs*](#).

Highly Polished Surface :

Vertical run-out less than 1 mm per 1000 mm resulting in extremely low leakage across the central divider seals.

Robust Spoke Structure

Highest Recovery Efficiency Ratio (RER) in the industry

Industry's Highest Recovery Performance :

- High Desiccant loading / coating.
- Equal sensible and latent recovery, thus, comparatively higher total enthalpy recovery.
- Higher performance, low pressure drops.
- Laminar airflow due to thin aluminium substrate and uniform desiccant coating.
- Superior airflow characteristics.

Wide Range & Additional Options :

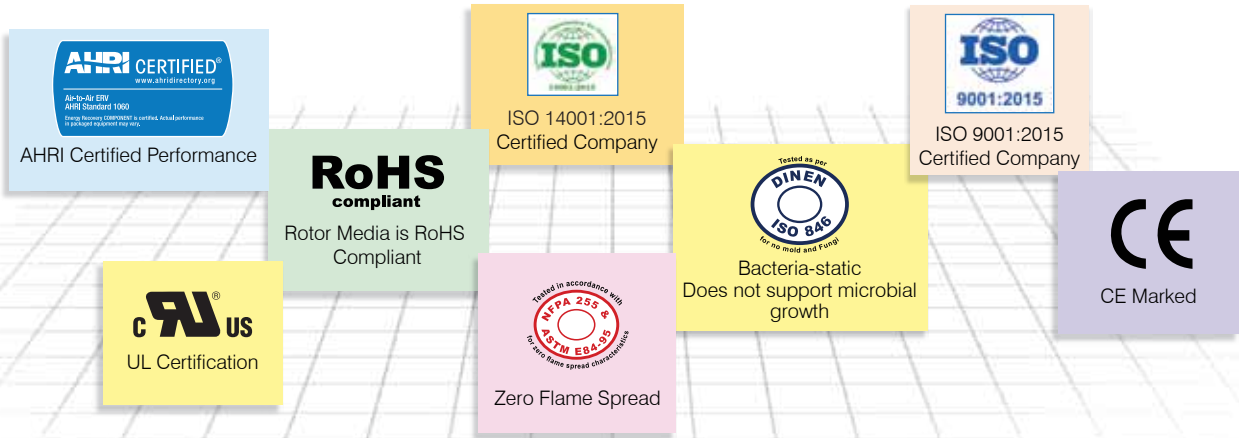
- Total energy recovery (Enthalpy) and AHRI Certified sensible wheels
- Customized flute height and rotor depth options
- Cassette as well as rotor options
- Standard and Customized options
- 500 mm to 5000 mm (dia.)
- Easy retrofit options

Segmented and Non-Segmented Options

Controls Package Available



Worldwide Recognition

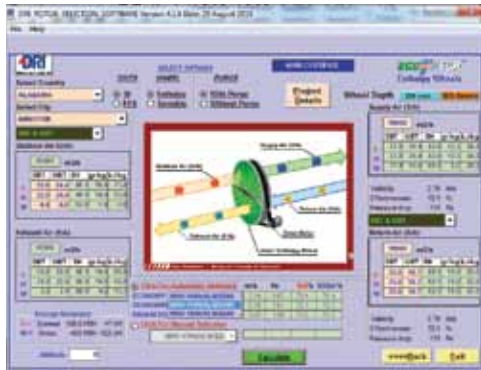


State-of-the-art Manufacturing & Test Facilities



Fully integrated Manufacturing Plant

Selection Software Available



World's largest installation base

DRI has the world's largest installation base of **3Å Molecular Sieve Coated Wheels**.

DRI Green building products help to maintain indoor Air Quality (IAQ) requirements and recover energy from exhaust air, resulting in considerable reduction in installed tonnage and utility bills.

They also assist in enhancing Indoor Air Quality (IAQ), maintaining desired temperature and humidity and increasing productivity.

Worldwide Memberships



DRI has its Airineers spread out world over

- India
- Indonesia
- Philippines
- China
- USA
- Bangladesh
- Switzerland
- UAE
- Malaysia
- Vietnam
- Korea
- Japan
- Canada
- Brazil
- Nigeria
- Saudi Arabia

Heat Recovery Wheel - Performance Data

HRW SERIES (MS-270A-1.8mm)



| Velocity | M/S | 1.0 | 1.5 | 2.0 | 2.5 | 3.0 | 3.5 | 4.0 | 4.5 | 5.0 | Height and Width "A" mm Inches | Depth in Flow Direction "B" mm Inches | Net Weight Kg. Pounds | |
|----------------------------------|--------------------|-------------------|-------|-------|-------|--------|--------|--------|--------|--------|---|--|--------------------------------|--|
| | FPM | 200 | 300 | 400 | 500 | 600 | 700 | 800 | 900 | 1000 | | | | |
| Sensible | | 90 | 88 | 85 | 82 | 80 | 78 | 77 | 75 | 73 | | | | |
| Latent (Winter Heating) | Efficiency in % | 89 | 86 | 83 | 80 | 78 | 76 | 74 | 72 | 70 | | | | |
| Latent (Summer Cooling) | | 88 | 85 | 82 | 79 | 77 | 75 | 73 | 71 | 69 | | | | |
| Total (Winter Heating) | | 90 | 87 | 84 | 81 | 79 | 78 | 76 | 74 | 72 | | | | |
| Total (Summer Cooling) | | 89 | 86 | 83 | 80 | 78 | 76 | 75 | 73 | 71 | | | | |
| Pressure Drop | | Pa | 76 | 97 | 127 | 165 | 203 | 234 | 264 | 295 | 325 | | | |
| | in. w.c | 0.30 | 0.38 | 0.50 | 0.65 | 0.80 | 0.92 | 1.04 | 1.16 | 1.28 | | | | |
| Model Number | | Air Volume | | | | | | | | | | | | |
| HRW-500(N)-MS 270A | CMH | 273 | 409 | 546 | 682 | 765 | 955 | 1092 | 1228 | 1365 | 700 | 365 | 63 | |
| | CFM | 161 | 241 | 321 | 402 | 450 | 562 | 642 | 723 | 803 | 27.6 | 14.4 | 139 | |
| HRW-600(N)-MS 270A | CMH | 416 | 623 | 831 | 1039 | 1189 | 1454 | 1662 | 1870 | 2078 | 800 | 365 | 71 | |
| | CFM | 245 | 367 | 489 | 611 | 700 | 856 | 978 | 1100 | 1223 | 31.5 | 14.4 | 156 | |
| HRW-700(N)-MS 270A | CMH | 586 | 879 | 1172 | 1465 | 1699 | 2051 | 2345 | 2638 | 2931 | 850 | 365 | 79 | |
| | CFM | 345 | 517 | 690 | 862 | 1000 | 1207 | 1380 | 1552 | 1725 | 33.5 | 14.4 | 174 | |
| HRW-800(N)-MS 270A | CMH | 785 | 1177 | 1569 | 1962 | 2379 | 2746 | 3139 | 3531 | 3923 | 950 | 365 | 90 | |
| | CFM | 462 | 693 | 924 | 1154 | 1400 | 1616 | 1847 | 2078 | 2309 | 37.4 | 14.4 | 198 | |
| HRW-900(N)-MS 270A | CMH | 1011 | 1517 | 2022 | 2528 | 3059 | 3539 | 4044 | 4550 | 5055 | 1030 | 365 | 103 | |
| | CFM | 595 | 893 | 1190 | 1488 | 1800 | 2083 | 2380 | 2678 | 2975 | 40.6 | 14.4 | 227 | |
| HRW-1000(N)-MS 270A | CMH | 1265 | 1898 | 2531 | 3164 | 3738 | 4429 | 5062 | 5695 | 6327 | 1130 | 365 | 113 | |
| | CFM | 745 | 1117 | 1489 | 1862 | 2200 | 2607 | 2979 | 3351 | 3724 | 44.5 | 14.4 | 249 | |
| HRW-1100(N)-MS 270A | CMH | 1548 | 2322 | 3096 | 3869 | 4588 | 5417 | 6191 | 6965 | 7739 | 1230 | 365 | 153 | |
| | CFM | 911 | 1366 | 1822 | 2277 | 2700 | 3188 | 3643 | 4099 | 4554 | 48.4 | 14.4 | 337 | |
| HRW-1200(N)-MS 270A | CMH | 1820 | 2730 | 3640 | 4550 | 5438 | 6371 | 7281 | 8191 | 9101 | 1330 | 365 | 169 | |
| | CFM | 1071 | 1607 | 2142 | 2678 | 3200 | 3749 | 4285 | 4820 | 5356 | 52.4 | 14.4 | 372 | |
| HRW-1300(N)-MS 270A | CMH | 2105 | 3157 | 4210 | 5262 | 6287 | 7367 | 8419 | 9472 | 10524 | 1430 | 365 | 199 | |
| | CFM | 1239 | 1858 | 2477 | 3097 | 3700 | 4335 | 4955 | 5574 | 6193 | 56.3 | 14.4 | 439 | |
| HRW-1400(N)-MS 270A | CMH | 2467 | 3701 | 4934 | 6168 | 7307 | 8635 | 9869 | 11103 | 12336 | 1530 | 365 | 221 | |
| | CFM | 1452 | 2178 | 2904 | 3630 | 4300 | 5082 | 5808 | 6534 | 7260 | 60.2 | 14.4 | 487 | |
| HRW-1500(N)-MS 270A | CMH | 2858 | 4286 | 5715 | 7144 | 8666 | 10002 | 11430 | 12859 | 14288 | 1630 | 365 | 239 | |
| | CFM | 1682 | 2523 | 3363 | 4204 | 5100 | 5886 | 6727 | 7568 | 8409 | 64.2 | 14.4 | 527 | |
| HRW-1600(N)-MS 270A | CMH | 3239 | 4859 | 6479 | 8099 | 9686 | 11338 | 12958 | 14577 | 16197 | 1730 | 395 | 276 | |
| | CFM | 1906 | 2860 | 3813 | 4766 | 5700 | 6672 | 7626 | 8579 | 9532 | 68.1 | 15.6 | 608 | |
| HRW-1700(N)-MS 270A | CMH | 3683 | 5524 | 7366 | 9207 | 11045 | 12890 | 14732 | 16573 | 18415 | 1830 | 395 | 318 | |
| | CFM | 2167 | 3251 | 4335 | 5418 | 6500 | 7586 | 8670 | 9753 | 10837 | 72.0 | 15.6 | 701 | |
| HRW-1800(N)-MS 270A | CMH | 4154 | 6232 | 8309 | 10386 | 12574 | 14540 | 16617 | 18695 | 20772 | 1930 | 395 | 342 | |
| | CFM | 2445 | 3667 | 4890 | 6112 | 7400 | 8557 | 9779 | 11002 | 12224 | 76.0 | 15.6 | 754 | |
| HRW-1900(N)-MS 270A | CMH | 4654 | 6981 | 9307 | 11634 | 13934 | 16288 | 18615 | 20942 | 23269 | 2030 | 395 | 365 | |
| | CFM | 2739 | 4108 | 5477 | 6847 | 8200 | 9585 | 10955 | 12324 | 13694 | 79.9 | 15.6 | 804 | |
| HRW-2000(N)-MS 270A | CMH | 5181 | 7771 | 10362 | 12952 | 15633 | 18133 | 20724 | 23314 | 25905 | 2130 | 395 | 392 | |
| | CFM | 3049 | 4574 | 6098 | 7623 | 9200 | 10672 | 12196 | 13721 | 15245 | 83.9 | 15.6 | 864 | |
| HRW-2130(N)-MS 270A | CMH | 6024 | 9036 | 12049 | 15061 | 18182 | 21085 | 24097 | 27109 | 30122 | 2201 | 395 | 427 | |
| | CFM | 3545 | 5318 | 7091 | 8863 | 10700 | 12409 | 14181 | 15954 | 17727 | 86.7 | 15.6 | 941 | |
| HRW-2200(N)-MS 270A (MonoG) | CMH | 6355 | 9532 | 12709 | 15887 | 19031 | 22241 | 25419 | 28596 | 31773 | 2201 | 395 | 427 | |
| | CFM | 3740 | 5610 | 7479 | 9349 | 11200 | 13089 | 14959 | 16829 | 18699 | 86.7 | 15.6 | 941 | |
| HRW-2200(N)-MS 270A (H.M. & SEG) | CMH | 6355 | 9532 | 12709 | 15887 | 19031 | 22241 | 25419 | 28596 | 31773 | 2400 | 530 | 772 | |
| | CFM | 3740 | 5610 | 7479 | 9349 | 11200 | 13089 | 14959 | 16829 | 18699 | 94.5 | 20.9 | 1701 | |
| HRW-2400(N)-MS 270A (MonoG) | CMH | 7608 | 11413 | 15217 | 19021 | 22940 | 26630 | 30344 | 34238 | 38042 | 2480 | 530 | 485 | |
| | CFM | 4478 | 6716 | 8955 | 11194 | 13500 | 15671 | 17910 | 20149 | 22388 | 97.6 | 15.6 | 1069 | |
| HRW-2400(N)-MS 270A (H.M. & SEG) | CMH | 7608 | 11413 | 15217 | 19021 | 22940 | 26630 | 30344 | 34238 | 38042 | 2600 | 530 | 851 | |
| | CFM | 4478 | 6716 | 8955 | 11194 | 13500 | 15671 | 17910 | 20149 | 22388 | 102.4 | 20.9 | 1876 | |
| HRW-2600(N)-MS 270A | CMH | 8974 | 13461 | 17948 | 22435 | 27018 | 31409 | 35896 | 40383 | 44870 | 2800 | 530 | 932 | |
| | CFM | 5281 | 7922 | 10562 | 13203 | 15900 | 18484 | 21125 | 23765 | 26406 | 110.2 | 20.9 | 2054 | |
| HRW-2800(N)-MS 270A | CMH | 10451 | 15677 | 20902 | 26128 | 31436 | 36579 | 41805 | 47030 | 52256 | 3000 | 530 | 1016 | |
| | CFM | 6150 | 9226 | 12301 | 15376 | 18500 | 21527 | 24602 | 27677 | 30752 | 118.1 | 20.9 | 2239 | |
| HRW-3000(N)-MS 270A | CMH | 12040 | 18060 | 24080 | 30100 | 36194 | 42140 | 48160 | 54180 | 60200 | 3200 | 530 | 1105 | |
| | CFM | 7086 | 10628 | 14171 | 17714 | 21300 | 24800 | 28342 | 31885 | 35428 | 126.0 | 20.9 | 2435 | |
| HRW-3200(N)-MS 270A | CMH | 13741 | 20611 | 27481 | 34352 | 41291 | 48093 | 54963 | 61833 | 68704 | 3400 | 584 | 1453 | |
| | CFM | 8086 | 12130 | 16173 | 20216 | 24300 | 28302 | 32346 | 36389 | 40432 | 133.9 | 23.0 | 3202 | |
| HRW-3400(N)-MS 270A | CMH | 15553 | 23330 | 31106 | 38883 | 46729 | 54436 | 62213 | 69989 | 77766 | 3600 | 584 | 1565 | |
| | CFM | 9153 | 13730 | 18306 | 22883 | 27500 | 32036 | 36612 | 41189 | 45765 | 141.7 | 23.0 | 3449 | |
| HRW-3600(N)-MS 270A | CMH | 17477 | 26216 | 34954 | 43693 | 52506 | 61170 | 69909 | 78648 | 87386 | 3800 | 584 | 1680 | |
| | CFM | 10285 | 15428 | 20571 | 25713 | 30900 | 35999 | 41141 | 46284 | 51427 | 149.6 | 23.0 | 3703 | |
| HRW-3800(N)-MS 270A | CMH | 19513 | 29270 | 39026 | 48783 | 58624 | 68296 | 78052 | 87809 | 97565 | 4000 | 584 | 1799 | |
| | CFM | 11483 | 17225 | 22967 | 28709 | 34500 | 40192 | 45934 | 51676 | 57417 | 157.5 | 23.0 | 3965 | |
| HRW-4000(N)-MS 270A | CMH | 21661 | 32491 | 43321 | 54152 | 65081 | 75912 | 86643 | 97473 | 108303 | 4200 | 584 | 1922 | |
| | CFM | 12747 | 19121 | 25495 | 31868 | 38300 | 44616 | 50989 | 57363 | 63737 | 165.4 | 23.0 | 4236 | |
| HRW-4200(N)-MS 270A | CMH | 23920 | 35880 | 47840 | 59800 | 71878 | 83720 | 95680 | 107640 | 119600 | 4400 | 584 | 2569 | |
| | CFM | 14077 | 21115 | 28154 | 35192 | 42300 | 49269 | 56308 | 63346 | 70384 | 173.2 | 23.0 | 5662 | |
| HRW-4400(N)-MS 270A | CMH | 26291 | 39436 | 52582 | 65727 | 79014 | 92018 | 105164 | 118309 | 131455 | 4600 | 584 | 2722 | |
| | CFM | 15472 | 23208 | 30944 | 38681 | 46500 | 54153 | 61889 | 69625 | 77361 | 181.1 | 23.0 | 5999 | |
| HRW-4600(N)-MS 270A | CMH | 28774 | 43161 | 57547 | 71934 | 86321 | 100708 | 115095 | 129482 | 143869 | 4800 | 584 | 2778 | |
| | CFM | 16933 | 25400 | 33867 | 42333 | 50800 | 59267 | 67733 | 76200 | 84667 | 189.0 | 23.0 | 6123 | |
| HRW-4800(N)-MS 270A | CMH | 31368 | 47052 | 62736 | 78421 | 94138 | 109789 | 125473 | 141157 | 156841 | 5000 | 584 | 3038 | |
| | CFM | 18460 | 27690 | 36920 | 46150 | 55400 | 64611 | 73841 | 83071 | 92301 | 196.9 | 23.0 | 6696 | |
| HRW-5000(N)-MS 270A | CMH | 34074 | 51112 | 68149 | 85186 | 102294 | 119260 | 136298 | 153335 | 170372 | 5200 | 584 | 3175 | |
| | CFM | 20053 | 30079 | 40106 | 50132 | 60200 | 70185 | 80211 | 90238 | 100264 | 204.7 | 23.0 | 6998 | |

Note: (1) 2200mm diameter and above rotor are available with removable segmented media. Half moon cassettes complete with half moon rotors for containerisation and ease of shipping are available as options. Dimensions and weight shall vary in such cases. (2) Because of our policy of continuous product improvements, specifications are subject to change without notice.



DESICCANT ROTORS INTERNATIONAL Pvt. Ltd.



| | | | | | |
|---|--|---|--|--|--|
| DRI (INDIA) 100-101, Udyog Vihar, Phase-IV, Gurgaon 122015, INDIA Tel.: +91-124-4188888 Fax: +91-124-4188800 E-Mail: drimarketing@pawha.com Web: www.drirotors.com | DRI (KOREA) 107-503 Yeoksam E pyonhan Sesang APT, Yeoksamdong 1755-4 Kangnamgu Seoul Korea (SeonReungro 69th street 20) Tel.: +82-02-414-0629 E-Mail: drikorea@hanmail.net Web: www.drikorea.co.kr | DRI (USA) 8675 Rio Grande Blvd. NW Los Ranchos, NM 87114, USA Phone: +1-928-639-2767 E-mail: mgclark@driamerica.com Website: www.driamerica.com | DRI (UAE) P.O. Box No. 120672, Q3-106, SAIF-Zone, Sharjah, UAE Tel.: +971-6-5578148 Fax: +971-6-5578149 Email: enquire@dri.ae Website: www.drirotors.com | Country MALAYSIA CHINA PHILIPPINES BRAZIL INDONESIA VIETNAM CANADA NIGERIA SWITZERLAND BANGLADESH | |
|---|--|---|--|--|--|